

CCD CAMERA



Model : VB-101
Compact size, 1/3" Sony Color CCD,
470 TV Line, Low lux high
sensitivity, BNC, 12V DC



Model : Sony SSC-DC378P
1/3" Sony Color CCD,
PAL, 480 TV Line, BNC, AC220-240V
Size : 60x54x120mm. 355g



Model : CL-1014HDC
1/3" Panasonic B&W CCD, PAL,
600 TV Line, BNC, 12V DC
Size : 60x50x100mm. 350g



Model : CL-2024AC
1/2" Sony Exview HAD Color CCD,
PAL, 540 TV Line, Selectable shutter
speed up to 1/10000s, BNC, 12V DC
Size : 60x50x120mm. 550g



Digital Camera Adaptor

DA10 : 10X Eyepiece Digital Adaptor*
Option : 7M pixel Digital Camera



Analog Eyepiece Camera

NVCE-1 : 640 x 480 pixel, 23 and 30mm adaptor,
with BNC cable and power supply 110V/ 220V



Digital Imaging Camera

NDC-1300 : 1.3M pixel, 1/2" CMOS, USB
2.0, Progressive scan 15f/s, Auto white
balance, Software with measuring function

ND-300 : 3.2M pixel, 1/2" CMOS, USB 2.0,
Progressive scan 6f/s, Auto white balance,
Software with measuring function



Digital Eyepiece Camera

NCE-5E : 1.3M pixel, 1/2" CMOS, USB 2.0,
30f/s, 23 and 30mm adaptor,
Software with measuring function

ND-300 : 3.1M pixel, 1/2" CMOS, USB 2.0,
23 and 30mm adaptor, Software
with measuring function

MONITORS



Black & White

Model : KMM-9M
10" B&W, 800TVL, Metal Casing,
EIA/CCIR, BNC, AC 100-240V
Size : 222 x 238 x 250mm. 4.5kg

Model : KMM-12
12" B&W, 800TVL, Metal Casing,
EIA/CCIR, BNC, AC 100-240V
Size : 304 x 320 x 310mm. 9kg



Color

Model : KCH-15DNA
15" Color, 800TVL, Metal Casing,
PAL/NTSC, BNC, AC 100-240V
Size : 350 x 350 x 360mm. 15kg

Direct AV LCD

Model : PL-700WTA
17" TFT LCD, Wide screen, Resolution 1440x900,
8ms, VESA, Direct AV/S-video/D-sub input.
Built-in PAL / NTSC
Size : 440 x 395 x 150mm. 3kg

OTHERS

Image Capturing & Measuring Software

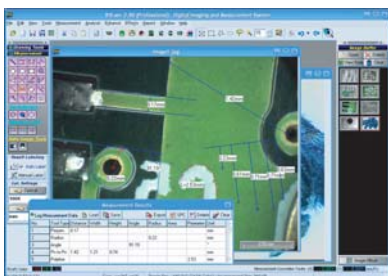


Image Capturing & Measurement Software provide the tools you need to display and capture video on your computer, desktop or laptop. Make precision measurements directly on the captured image.

Features:

Capturing Image, Measurement (Distance, Point to point, Linear, Line, Radius and circle) Editing & Label



VGA Crosshair Generator

Model : BY-DRP1
Selectable line type, 8 line color. AV/S-Video input,
VGA output, Power input DC 5V